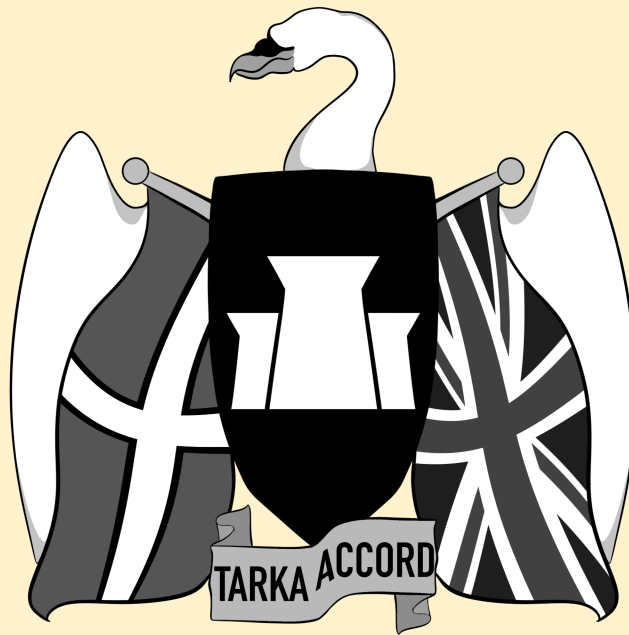


Tarka Accord



Northern Devon

Population Growth

Author - Oscar. C. Kelly | Tarka Accord Director

Contributor - Finlay Carlyon

Published - 02/May/2024

Introduction:

For use on the Tarka Accord website ([1](#)) and for further studies and reports, it was deemed necessary to have information on the population of Northern Devon and how it has grown over time.

The term 'Northern Devon' will be used in this document to refer to an area in Devon consisting of the districts of Torridge and North Devon.

2011-to-2021 Northern Devon Population Change:

Using information provided by the Office of National Statistics, ONS, ([2](#), [3](#)) evaluating the information in the 2011 and 2021 censuses, the population increase in Northern Devon between those two dates can be attained.

Information Directly from the ONS:

On the page covering Torridge ([2](#)), the ONS wrote that the population "increased by 6.7%, from around 63,800 in 2011 to 68,100 in 2021".

For North Devon, the ONS's page ([3](#)) presents that the population "increased by 5.3%, from around 93,700 in 2011 to 98,600 in 2021".

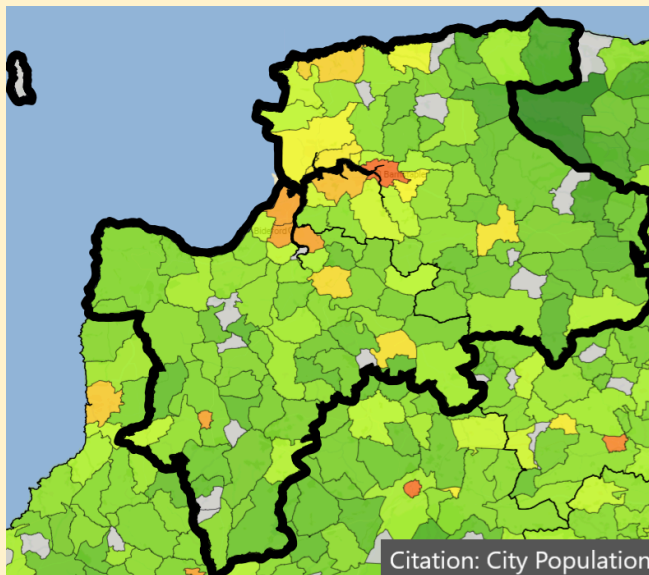
Combining the statistics for the two areas, it can be found that the population of Northern Devon was ~157,500 in 2011 and increased to ~166,700 in 2021. The percentage change between these two approximate numbers is 5.841269841%, meaning that the percentage increase in population for North Devon could be expressed as 5.84% if rounded to two decimal places. Additionally from the two approximate numbers, it can be found that the population increased by ~9200 people during the decade.

Credibility of 'City Population' (or, 'CP'):

'City Population' is a website that presents information from various censuses on the population of areas. As a test of the application's credibility, City Population presents on their page on the Southwest of England ([4](#)) that North Devon District had a population of 98,611 according to the 2021 Census and Torridge District had a population of 68,114 according to the census. This information, if rounded to the nearest factor of 100, would be the same as the approximate numbers presented by the ONS previously in this document. Because of this accuracy, City Population (or, 'CP') is likely a credible source on the matter of population statistics in the South West of England. With the information provided by CP, it can be found that the more specific population of Northern Devon in 2021 was: 166,725.

Northern Devon Population Density (or, 'P.Density'):

As a feature of the interactive map provided by CP (4), the population density (or, 'p.density') of an area can be displayed. Below is an excerpt of the map showing p.density of Parish Councils in Northern Devon and some surrounding areas (with a thicker black border added around Northern Devon):



In this map, green represents lower p.density and red represents higher p.density (and grey: no data). From the map, it can be clearly seen that the highest p.density in Northern Devon is in an area around the Taw and Torridge Rivers.

For specific p.density numbers, the following are the only parishes with a higher than 1000/km² p.density:

- Barnstaple
- Bideford
- Northam
- Holsworthy

Aside from Holsworthy, all of the areas with a higher than 1000/km² p.density are within this Taw/Torridge area.

To additionally reinforce the fact that the Taw/Torridge area is significant:

- Fremington Parish has a notably higher p.density than other areas that don't meet the 1000/km² threshold at 745.2/km² where the second most densely populated area under 1000/km² is Ilfracombe at 499.3/km².
- Barnstaple Parish also breaches the 2000/km² threshold with a p.density of 2,471/km².

The Taw/Torridge Area - Definition:

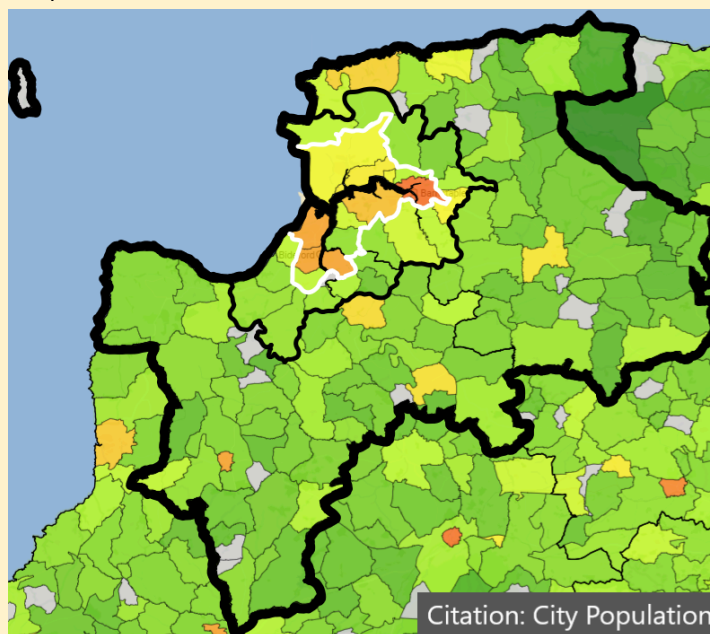
As established before, there is an area surrounding the Taw and Torridge Rivers with a high p.density compared to the rest of Northern Devon. Due to the importance of this area, producing various population statistics to compare to the rest of Northern Devon would be appropriate and likely useful.

To define a particular Taw/Torridge area, two definitions can be used:

- The 'Lesser' Taw/Torridge Area "All parishes of which border either the Taw, Torridge, or the Taw & Torridge Estuary."
- The 'Greater' Taw/Torridge Area "All parishes of which border either the Taw, Torridge, Taw & Torridge Estuary, or another parish of which borders one of the aforementioned."

As to exclude areas further in-land that have little-to-no connection with the main urban centre, the Taw and Torridge will be considered to end in Barnstaple and Bideford & Littleham respectively.

Map of Taw/Torridge Area within Northern Devon:



On this map there are three added borders to the original map by City Population (4), of which are listed below:

- The thicker and larger black border surrounds what has been established to be Northern Devon previously in this document.
- The thinner and smaller black border surrounds the Greater Taw/Torridge area.
- The thin white border surrounds the Lesser Taw/Torridge area.

The Taw/Torridge Area and Northern Devon - Statistics:

(region information provided by City Population: [\(4\)](#))

The Lesser Taw/Torridge Area for 2021:

- Population: 80,230 people
- Area: 134.547km²
- P.Density: 596.30/km² (rounded to two decimal places)

The Lesser Taw/Torridge Area for 2011:

- Population: 75,648 people
- Area: 134.547km²
- P.Density: 562.24/km² (rounded to two decimal places)

The Lesser Taw/Torridge Area for 2001:

- Population: 69,576 people
- Area: 134.547km²
- P.Density: 517.11/km² (rounded to two decimal places)

The Greater Taw/Torridge Area for 2021:

- Population: 94,458 people
- Area: 386.224km²
- P.Density: 244.57/km² (rounded to two decimal places)

The Greater Taw/Torridge Area for 2011:

- Population: 88,844 people
- Area: 386.224km²
- P.Density: 230.03/km² (rounded to two decimal places)

The Greater Taw/Torridge Area for 2001:

- Population: 88,330 people
- Area: 386.224km²
- P.Density: 228.70/km² (rounded to two decimal places)

Northern Devon for 2021:

- Population: 166,725 people
- Area: 2069.9km²
- P.Density: 80.55/km² (rounded to two decimal places)

Northern Devon for 2011:

- Population: 157,506 people
- Area: 2069.9km²
- P.Density: 76.09/km² (rounded to two decimal places)

Northern Devon for 2001:

- Population: 146,473 people
- Area: 2069.9km²
- P.Density: 70.76/km² (rounded to two decimal places)

The Lesser Taw/Torridge Area Population Change from 2001-to-2021:

- Population: +10,654 people
- P.Density: +79.18/km² (rounded to two decimal places)

The Greater Taw/Torridge Area Population Change from 2001-to-2021:

- Population: +6,128 people
- P.Density: +15.87/km² (rounded to two decimal places)

Northern Devon Population Change from 2001-to-2021:

- Population: +20,252 people
- P.Density: +9.78/km² (rounded to two decimal places)

Percentage (or, %) of Northern Devon Population in the Taw/Torridge Area from 2001-to-2021, rounded to two decimal places:

- The Lesser Taw/Torridge Area:
 - % in 2021: 48.12%
 - % in 2011: 48.03%
 - % in 2001: 47.50%
- The Greater Taw/Torridge Area:
 - % in 2021: 56.65%
 - % in 2011: 56.41%
 - % in 2001: 60.30%

Percentage (or, %) of the Greater Taw/Torridge Area who also live in the Lesser Taw/Torridge Area from 2001-to-2021, rounded to two decimal places:

- % in 2021: 84.94%
- % in 2011: 85.15%
- % in 2001: 78.77%

Other Noteworthy Settlements:

Other noteworthy settlements in Northern Devon that are outside of the Taw/Torridge area (Lesser and Greater) could include Ilfracombe, South Molton, Great Torrington and Holsworthy. Ilfracombe, South Molton and Great Torrington are notable due to being the only parishes outside of the Taw/Torridge area with above 5,000 people in 2021 (11,042 for Ilfracombe, 6,354 for South Molton and 5,797 for Great Torrington). Holsworthy is notable due to being the only parish outside of the Taw/Torridge area with a population density above 1000/km² in 2021 (1,223/km² specifically).

Through a different way of understanding the population in Holsworthy, Holsworthy Parish and Holsworthy Hamlets Parish can be included together. With considering both of the Holsworthy Parishes as 'Greater Holsworthy', the 2021 population would be 4,495 and the 2021 p.density would be 108.94/km² (rounded to two decimal places). Although the population of 'Greater Holsworthy' does not meet the 5,000 threshold that Ilfracombe, South Molton and Great Torrington did, 4,495 is still considerably more than Combe Martin's population of 2,645 (of which is the second most populous parish that does not meet the 5,000 threshold after 'Greater Holsworthy').

To understand the continued significance of these other prominent settlements when compared to the Taw/Torridge area, the populations of these other prominent settlements and the population of the Taw/Torridge area can be combined into a total. The percentage of people who live in the other prominent settlements when compared to the total and how that percentage changes over time could be used as a measure to understand their continued significance. The settlements included in 'other prominent settlements' includes: Ilfracombe, South Molton, Great Torrington and 'Greater Holsworthy'.

The percentages, rounded to two decimal places, of the previously established total population are thus:

- 2021 (Lesser Taw/Torridge Area): 34.51%
- 2021 (Greater Taw/Torridge Area): 29.31%
- 2011 (Lesser Taw/Torridge Area): 34.28%
- 2011 (Greater Taw/Torridge Area): 29.19%
- 2001 (Lesser Taw/Torridge Area): 33.91%
- 2001 (Greater Taw/Torridge Area): 26.71%

Citations:

List of Citations / References:

1 - Tarka Accord Website:

- Published: (*most recently*) 30.April.2024
- By: Tarka Accord
- Link: <https://www.tarkaaccord.info>

2 - 'How the population changed in Torridge: Census 2021'

- Published: 28.June.2022 | Accessed: 30.April.2024
- By: The Office of National Statistics
- Link: <https://www.ons.gov.uk/visualisations/censuspopulationchange/E07000046/>

3 - 'How the population change in North Devon: Census 2021'

- Published: 28.June.2022 | Accessed: 30.April.2024
- By: The Office of National Statistics
- Link: <https://www.ons.gov.uk/visualisations/censuspopulationchange/E07000043/>

4 - 'United Kingdom: South West England'

- Published: n.d | Accessed: 1.May.2024
- By: City Population
- Link: <https://www.citypopulation.de/en/uk/southwestengland/admin/>